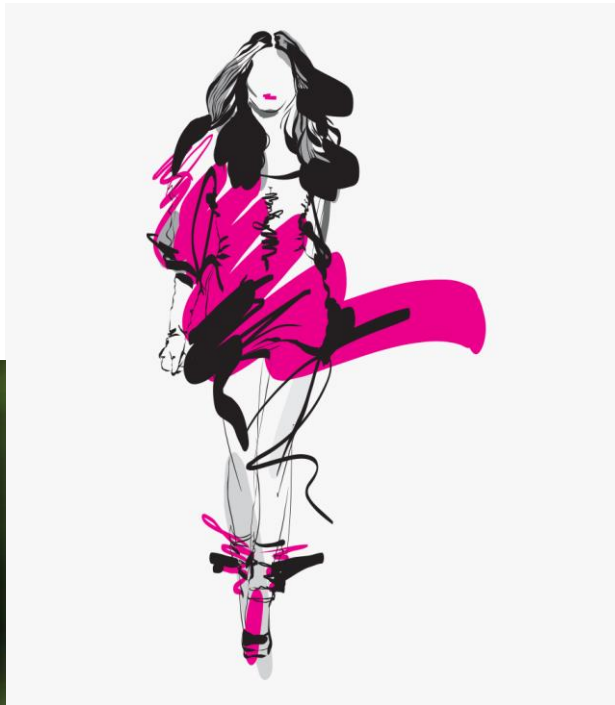


Holy Cross Hospital

Ross White - CEO

Three Patients



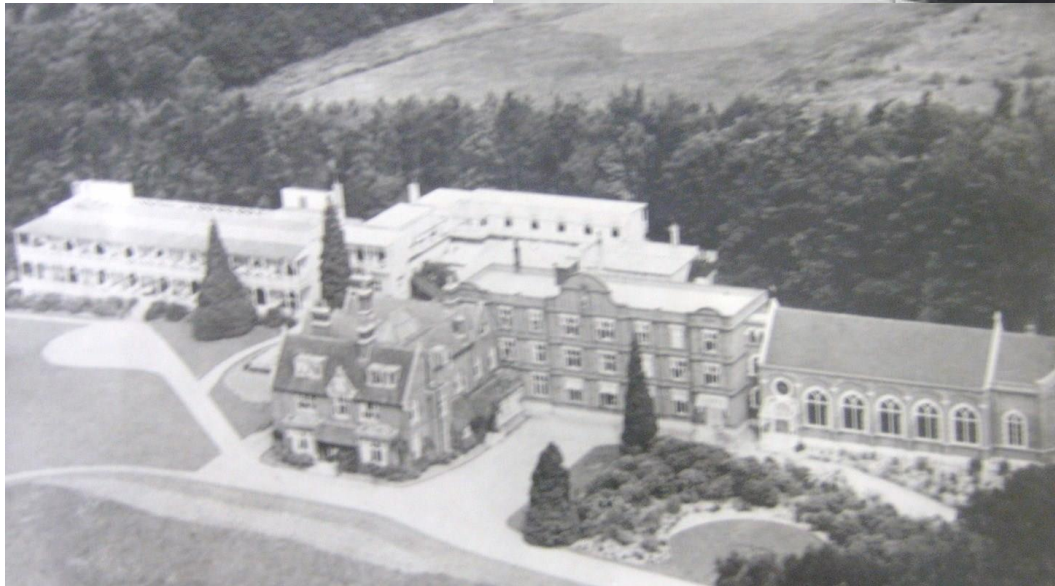
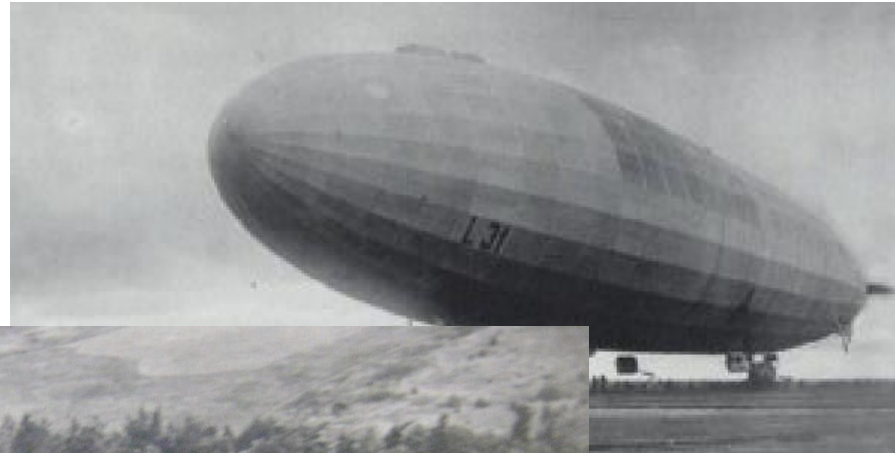
Origins



After many difficulties the congregation was founded and called Daughters of the Cross of Liege in 1833



Ramsgate to Haslemere in 1917



Originally a TB hospital



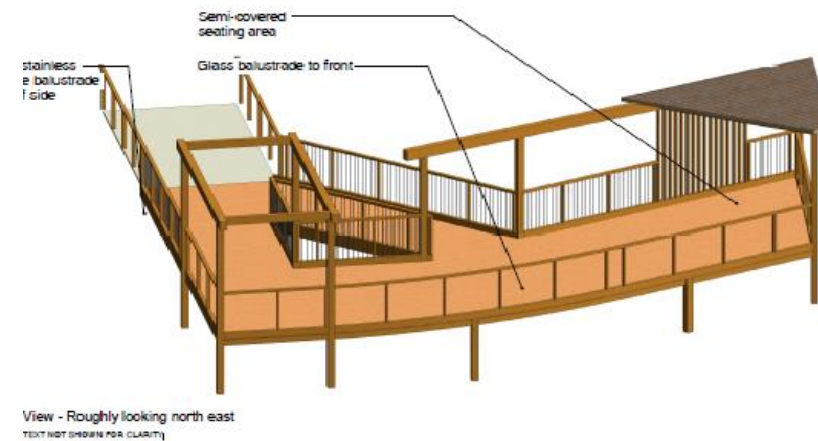
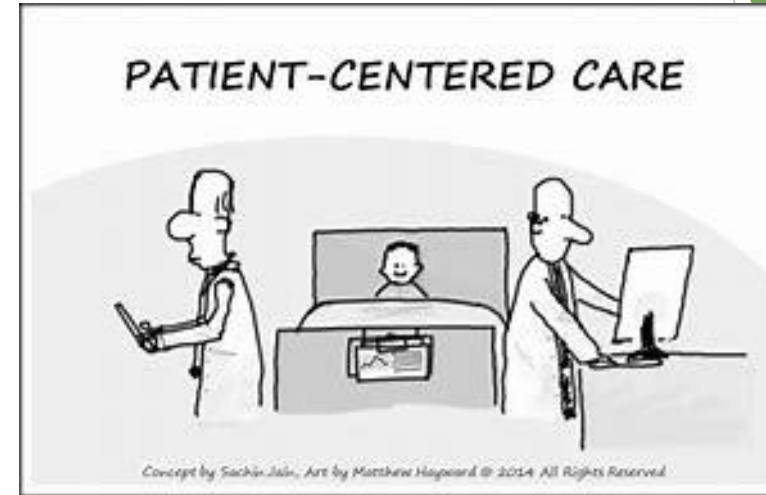
The Hospital Today




Holy Cross Hospital

What are Our Services?

- ▶ Consultant-led - weekly ward round
- ▶ GP daily ward round
- ▶ 40 beds - with plans to go to 50
- ▶ MDT - nurses, physiotherapy/hydro, OT, SLT, neuropsychology, dietician
- ▶ Chaplain, music therapy, patient activities and outings, art
- ▶ Outpatient physiotherapy services (not neuro)
- ▶ Treehouse
- ▶ Holiday Home in Selsey



Daughters of the Cross



Neurological Injury

- ▶ Hypoxic - drowning, cardiac arrest, strangulation
- ▶ Traumatic - RTAs, falls, percussive
- ▶ Stroke
- ▶ Infection
- ▶ Spinal Cord Injury
- ▶ Progressive Neurological disease - eg MND
- ▶ Guillain-Barre syndrome

The Uncertainty of Brain Injury



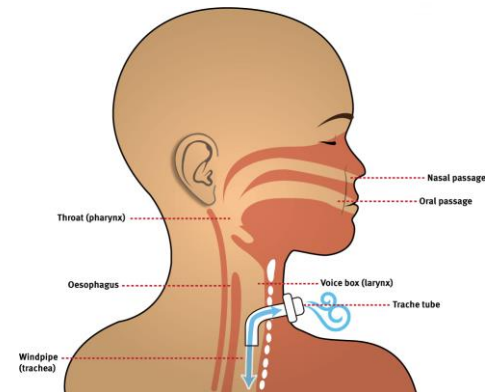
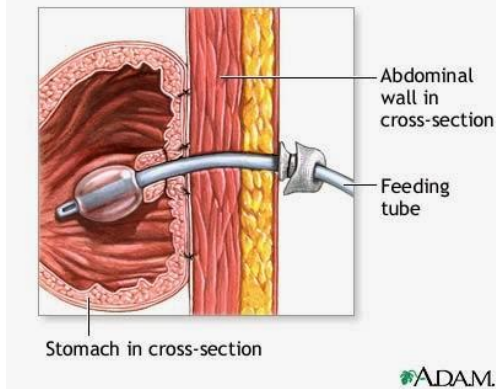
MAJOR CAUSES OF TRAUMATIC BRAIN INJURIES*



*Based on information from the National Center for Injury Prevention and Control, CDC

1%	SUICIDE
11%	ASSAULT
19%	STRUCK BY OBJECTS (INCL. SPORTS)
20%	MOTOR VEHICLE ACCIDENTS
21%	OTHER
28%	FALLS

Heavy end



Thank You



Any Questions?